

GTS-WIFI INSTRUCTIONS – iPHONE



WIFI PAIRING MANUAL FOR iPHONE

GET READY FOR CONNECTION

Go to the App Store, download “Radiant Wi-Fi” app and install it. Then create an account with your email address and sign in; Ensure you are connected to your WiFi network, keep your phone, your thermostat, and your WiFi router as close as possible.

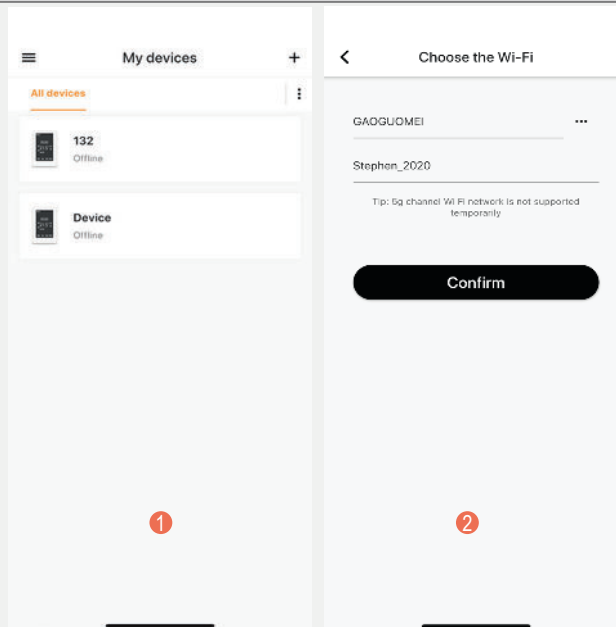
- 1 On your thermostat, press POWER to turn your thermostat off
- 2 Press MENU
- 3 Press NEXT to choose MENU 4 (choose MENU 3 for GTS-TIM series)
- 4 Press and hold the DEL button until you see REF, wait for a few seconds until the wifi symbol is flashing on screen.



Radiant Wi-Fi

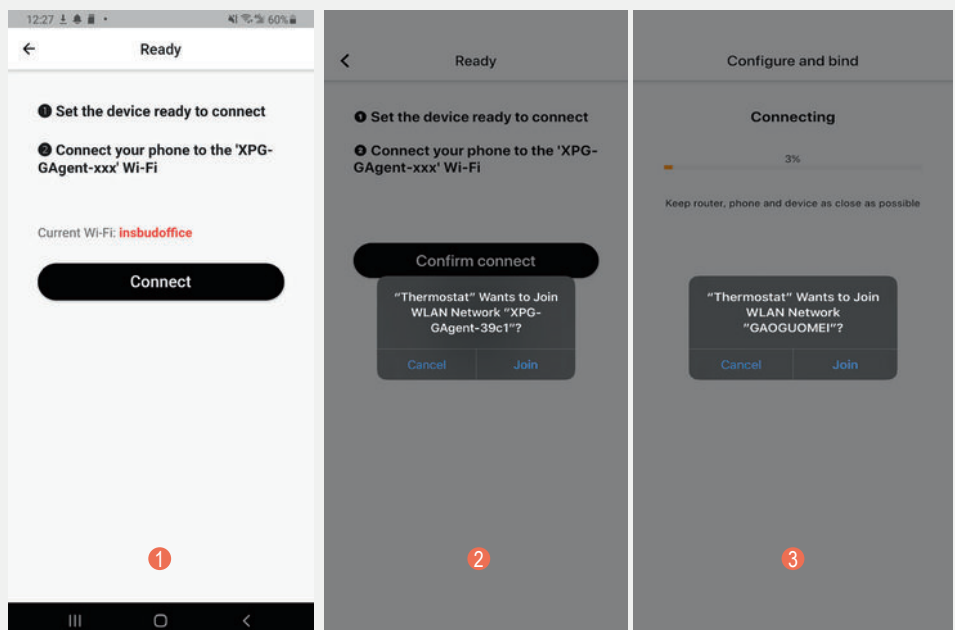
STEP 1

- 1 Touch “+” on the top right corner of your phone to add a new device;
- 2 Enter your WiFi details. Please ensure you have selected the correct WiFi network and the password you enter is correct. Then press “Confirm”.



STEP 2

- 1 Press “Connect”.
- 2 Press “Join” as your phone wants to join device’s WiFi hotspot named XPG-GAgent-xxxx;
- 3 Press “Join” as your phone needs to go back to your original WiFi network. The connection process is automatically completed. Now your thermostat is accessible via the app.





WIFI PAIRING MANUAL FOR iPhone CONTINUED

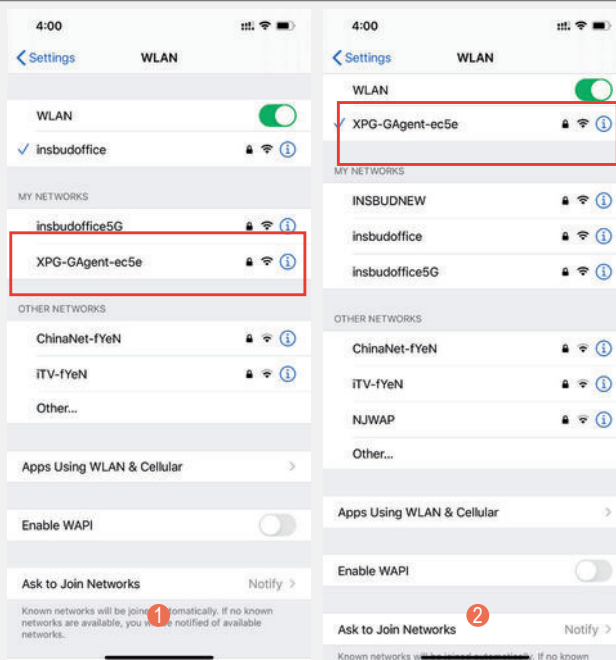
TROUBLESHOOTING

Some phones might not be able to join device's WiFi hotspot automatically. In this case, please do it manually. Follow steps below,

❶ In Step 2, before pressing "Connect", please go to your phone's Settings - WLAN

❷ Connect your phone to device's WiFi hotspot named XPG-GAgent-xxxx;

Once connected to XPG-GAgent-xxxx, return back to the thermostat App and follow Step 2 above



See overleaf for Android instructions >>>

GTS-WIFI INSTRUCTIONS – ANDROID



WIFI PAIRING MANUAL FOR ANDROID

GET READY FOR CONNECTION

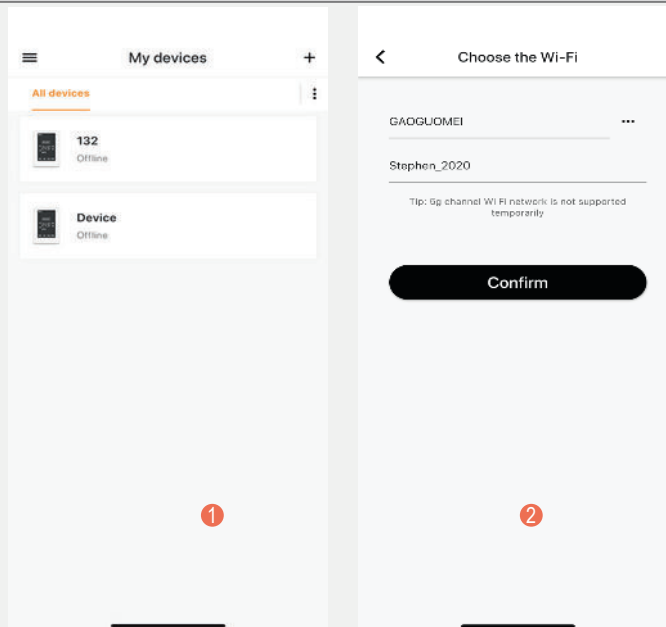
Go to Google Play, download “Radiant Wi-Fi” app and install it. Then create an account with your email address and sign in; Ensure your phone is connected to your WiFi network, keep your phone, your thermostat, and your WiFi router as close as possible.

- ① On your thermostat, press POWER to turn your thermostat off
- ② Press MENU
- ③ Press NEXT to choose MENU 4 (choose MENU 3 for GTS-TIM series)
- ④ Press and hold the DEL button until you see REF, wait for a few seconds until the wifi symbol is flashing on screen.



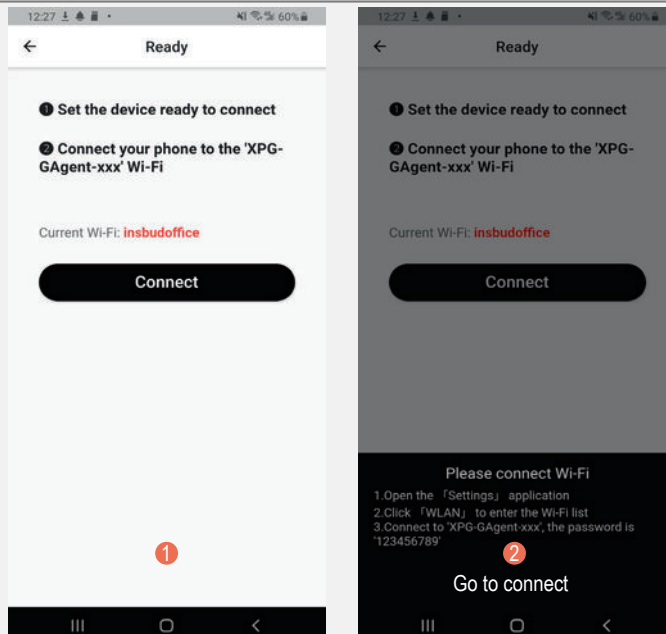
STEP 1

- ① Touch “+” on the top right corner of your phone to add a new device;
- ② Enter your WiFi details. Please ensure you have selected the correct WiFi network and the password you enter is correct. Then press “Confirm”.



STEP 2

- ① Press “Connect”.
- ② Press “Go to connect”.





WIFI PAIRING MANUAL FOR ANDROID CONTINUED

STEP 3

- 1 Now your phone automatically goes to WLAN settings page.
- 2 Connect your phone to device's WiFi hotspot named XPG-GAgent-xxxx;
- 3 When asked for the password, below XPG-GAgent please enter 123456789
- 4 Once connected to XPG-GAgent-xxxx, return back to the thermostat App and the connection process will automatically be completed. Now your thermostat is accessible via the app.

